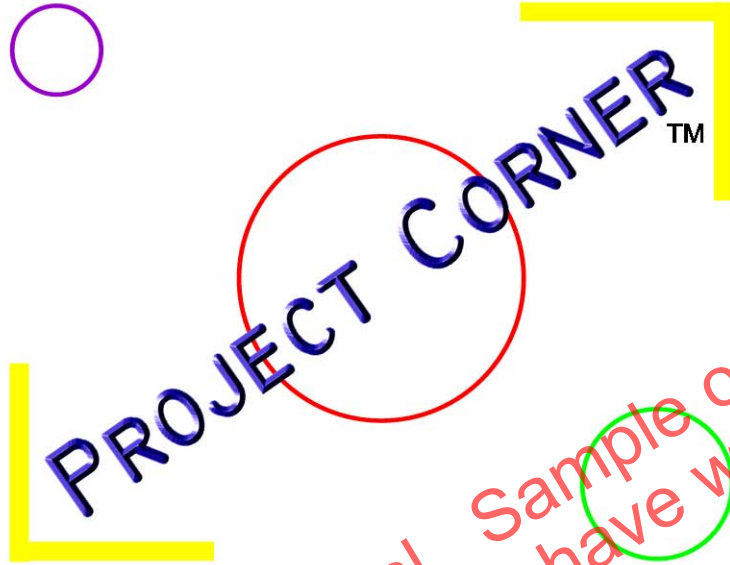


# COMPLETE-A-SKETCH™



PROJECT CORNER™



Copyrighted material. Sample only.  
Purchased version does not have watermark.

*Archive*  
**'06**



**INSIGHT™**  
**TECHNICAL EDUCATION**

[www.insightteched.com](http://www.insightteched.com)

COMPLETE-A-SKETCH™

PROJECT CORNER™

*Archive '06*

Copyright © 2007 by Mel Peterman & Clay Peterman

All rights reserved. No part of this work may be reproduced in any form or by any electronic means, including information storage and retrieval systems, without the written permission from the publisher. The pages may be freely printed and used as intended by the publisher.

This is shareware.

We ask that if you use this collection, you send \$5.00 to Insight Technical Education for Archive '06. Send payment to the address listed on our website:

[www.insighttched.com](http://www.insighttched.com)

Disclaimer:

This Software is sold on an "AS IS" basis.

We believe this collection to operate as intended, although we make no warranties, either expressed or implied. Nor will we be held responsible for loss of data to any system either directly or indirectly related to the use of this collection.

Designed by Mel Peterman

Illustrations by Clay Peterman

Published by Insight Technical Education

[www.insighttched.com](http://www.insighttched.com)

877-640-2256

**NOTE:** This Software may NOT be copied to any internet site or shareware libraries without the expressed written consent of the author.

Requirements:

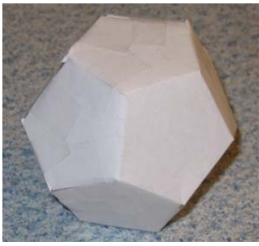
Adobe Acrobat 7 reader or higher. Download available at [www.adobe.com](http://www.adobe.com).

Support:

The only technical support that is available for Acrobat is from Adobe and is subject to the policies of Adobe. If the file does not work for you, please contact us at [www.insighttched.com](http://www.insighttched.com). If the file will not open or does not work for you, we will replace it or give you your money back. Original proof of purchase from Insight Technical Education is required, no exceptions.



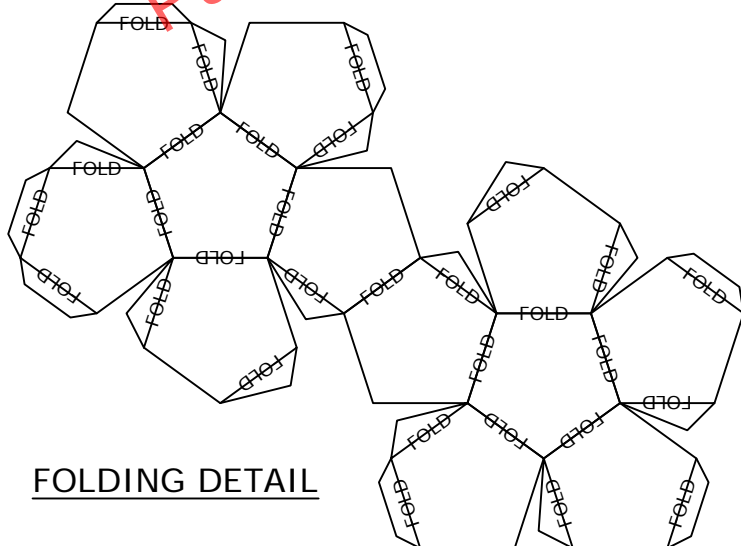
Insight™, Insight™ Technical Education, Complete-A-Sketch™, insighttched.com™, insighttechnicaleducation.com™, sixbranches.com™, and Project Corner™ Project Corner Logo, and Insight Technical Education Train Logo are trademarks of Melvin G. Peterman.



Date: January, 2006  
 Project: Dodechedron  
 Project description: Draw and build a paper Dodechedron.  
 What is flat pattern? A flat is a drawing on any flat material that can be folded into any shape.



FLAT PATTERN FOR DODECAHEDRON



FOLDING DETAIL

Instructions:

1. Draw over the intersections with a pencil using a straight edge.
2. Cut out the flat pattern.
3. Fold on all of the lines marked "FOLD" on the "FOLDING DETAIL".
4. Use small pieces of clear tape to fasten the tabs of the flat pattern in place.

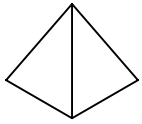


**INSIGHT™**  
**TECHNICAL EDUCATION**

877-640-2256

For more information, visit the Insight Technical Education web site at [www.insighttech.com](http://www.insighttech.com)

Drawn by: Clay Peterman  
 ©Melvin G. Peterman 2006. ALL RIGHTS RESERVED. This project may not be copied or transmitted without written permission. Permission is granted to purchaser to print for personal use only.



Date: February, 2005

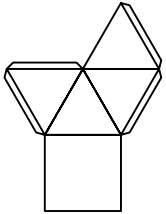
Project: Isometric Pyramid

Project description: Draw and build a paper pyramid.

What is Isometric? [Click here!](#)

Instructions:

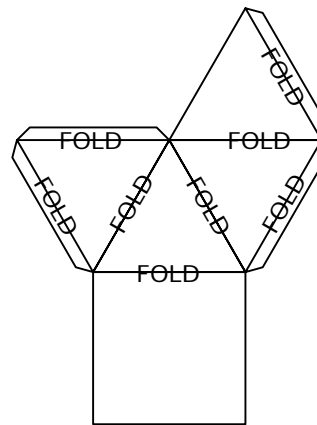
Draw over the intersections with a pencil to complete this pyramid. You may trace using a straight edge or by doing it freehand. Try drawing one freehand on a blank piece of paper.



Instructions:

1. Draw over the intersections with a pencil using a straight edge.
2. Cut out the flat pattern.
3. Fold on all of the lines marked "FOLD" on the "FOLDING DETAIL".
4. Use small pieces of clear tape to fasten the tabs of the flat pattern in place.

Copyrighted material. Sample only. Purchased version does not have watermark.



FOLDING DETAIL

FLAT PATTERN FOR PYRAMID

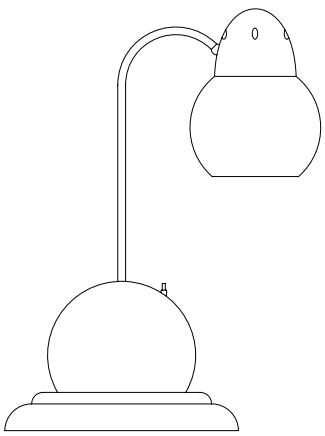


**INSIGHT™**  
**TECHNICAL EDUCATION**

877-640-2256

For more information, visit the Insight Technical Education web site at [www.insightteched.com](http://www.insightteched.com)

Drawn by: Clay Peterman



Date: February, 2006  
Project: Desk Lamp  
Project description:  
Complete-A-Sketch™  
The completed picture is  
shown here. Draw your  
lines over the intersections  
shown on the big layout.

Instructions:

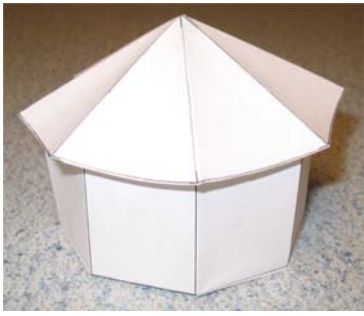
1. Draw over the intersections with a pencil freehand or using tools (like a straight edge).
2. Try drawing the lamp on a blank piece of paper.

Copyrighted material. Sample only.  
Purchased version does not have watermark.



**INSIGHT™**  
**TECHNICAL EDUCATION**

877-640-2256



Instructions:

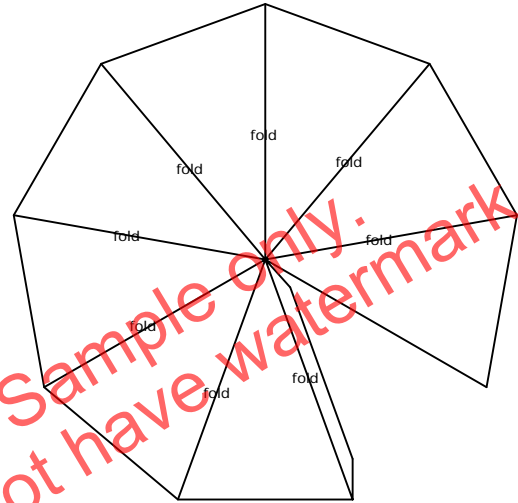
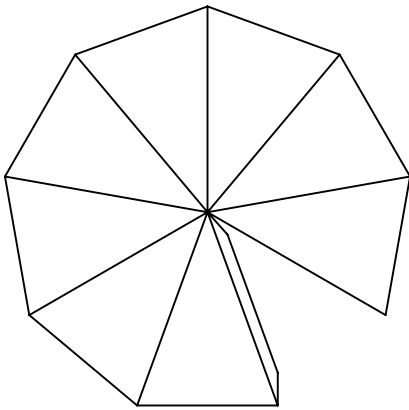
1. Draw over the intersections with a pencil using a straight edge.
2. Cut out the flat patterns from both pages.
3. Fold on all of the lines marked "FOLD" on the "FOLDING DETAIL".
4. Use small pieces of clear tape to fasten the tabs of the flat pattern in place.

Page 1 of 2

Date: March, 2006

Project: Yurt Model

Project description: Draw and build a paper yurt.



FOLDING DETAIL FOR ROOF

Copyrighted material. Sample only.  
Purchased version does not have watermark.

FLAT PATTERN FOR ROOF



**INSIGHT™**  
**TECHNICAL EDUCATION**

877-640-2256

For more information, visit the Insight Technical Education web site at [www.insighttech.com](http://www.insighttech.com)

Drawn by: Clay Peterman

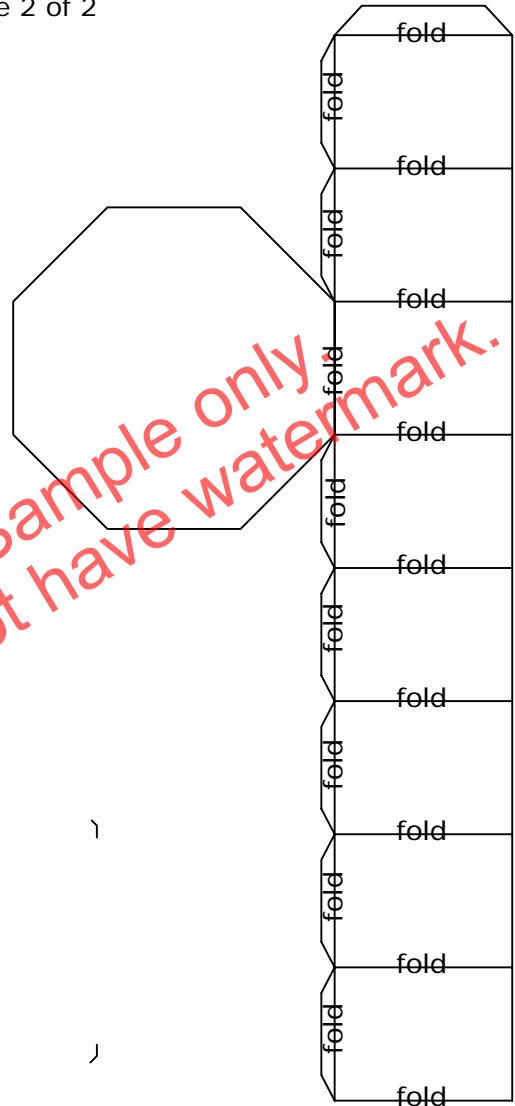


FLAT PATTERN FOR WALLS

Instructions:

1. Draw over the intersections with a pencil using a straight edge.
2. Cut out the flat patterns from both pages.
3. Fold on all of the lines marked "FOLD" on the "FOLDING DETAIL".
4. Use small pieces of clear tape to fasten the tabs of the flat pattern in place.
5. As an option, consider drawing a door and some windows.

Page 2 of 2



FOLDING DETAIL FOR WALLS



**INSIGHT™**  
**TECHNICAL EDUCATION**

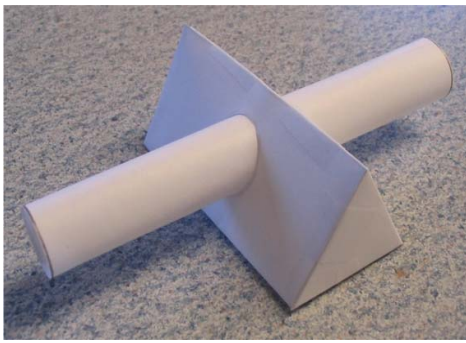
877-640-2256

For more information, visit the Insight Technical Education web site at [www.insightteched.com](http://www.insightteched.com)

Drawn by: Clay Peterman

©Melvin G. Peterman 2006. ALL RIGHTS RESERVED. This project may not be copied or transmitted without written permission.

Permission is granted to purchaser to print for personal use only.

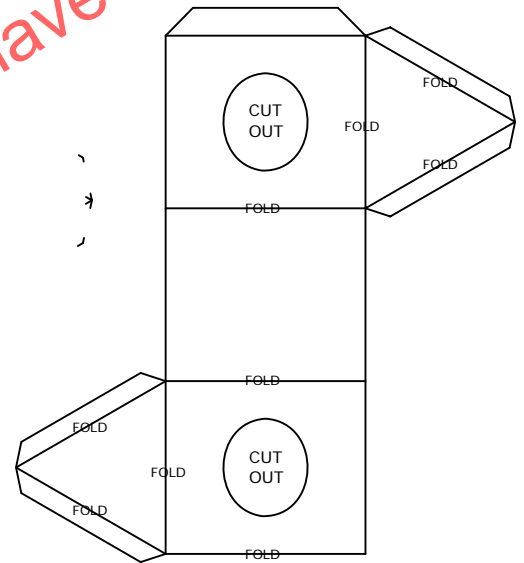


**Instructions:**

1. Draw over the intersections with a pencil using a straight edge.
2. Cut out the flat patterns.
3. Fold on all of the lines marked "FOLD" on the "FOLDING DETAIL".
4. Cut where it says "CUT OUT".
5. Use small pieces of clear tape to fasten the tabs of the flat pattern in place.
6. Insert tube through the holes you cut out.

Date: April, 2006  
 Project: Trianglular Prism  
 Project description:  
 Draw and build a  
 paper triangulsr prism.

ROLL TO DASHED LINE  
FLAT PATTERN FOR TUBE



FOLDING DETAIL FOR PRISM

FLAT PATTERN FOR PRISM



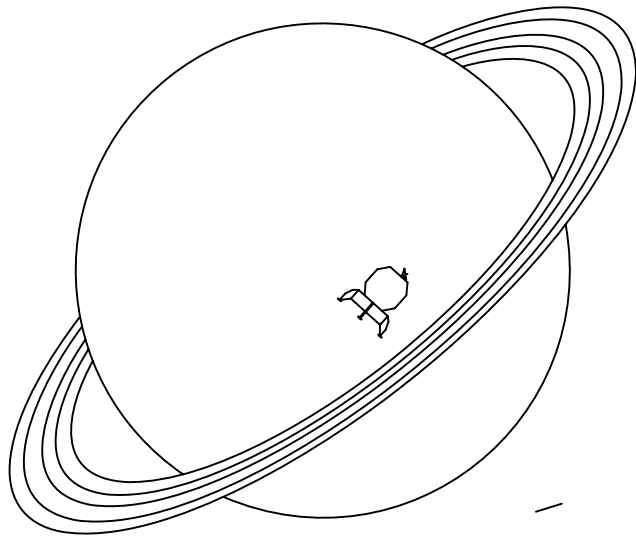
**INSIGHT™  
 TECHNICAL EDUCATION**

877-640-2256

For more information, visit the Insight Technical Education web site at [www.insightteched.com](http://www.insightteched.com)

Drawn by: Clay Peterman





Instructions:

1. Draw over the intersections.
2. Try drawing the planet on a blank piece of paper.

Date: May, 2006

Project: Planet

Project description:

Draw a planet and probe.

Copyrighted material. Sample only.  
Purchased version does not have watermark.

PLANET COMPLETE-A-SKETCH

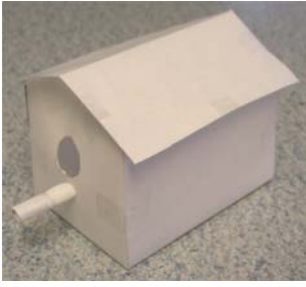


**INSIGHT™**  
**TECHNICAL EDUCATION**

877-640-2256

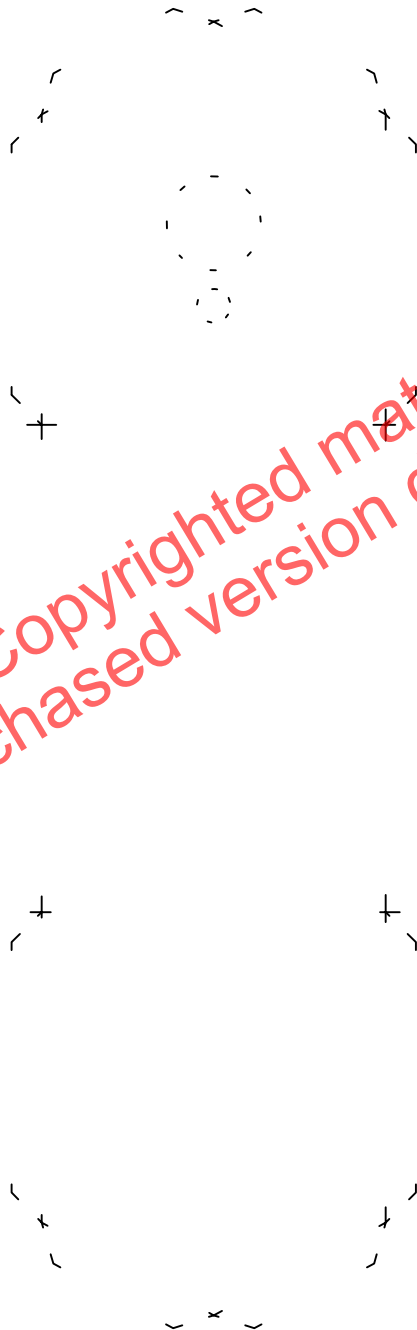
For more information, visit the Insight Technical Education web site at [www.insightteched.com](http://www.insightteched.com)

Drawn by: Clay Peterman



- Instructions:
1. Draw over the intersections using a straight edge or free hand.
  2. Cut out the flat patterns.
  3. Fold on all of the lines marked "FOLD" on the "FOLDING DETAIL".
  4. Cut where it says "CUT OUT".
  5. Use small pieces of clear tape, or glue, to fasten the tabs of the flat pattern in place.
  6. Insert tube through the hole you cut out.

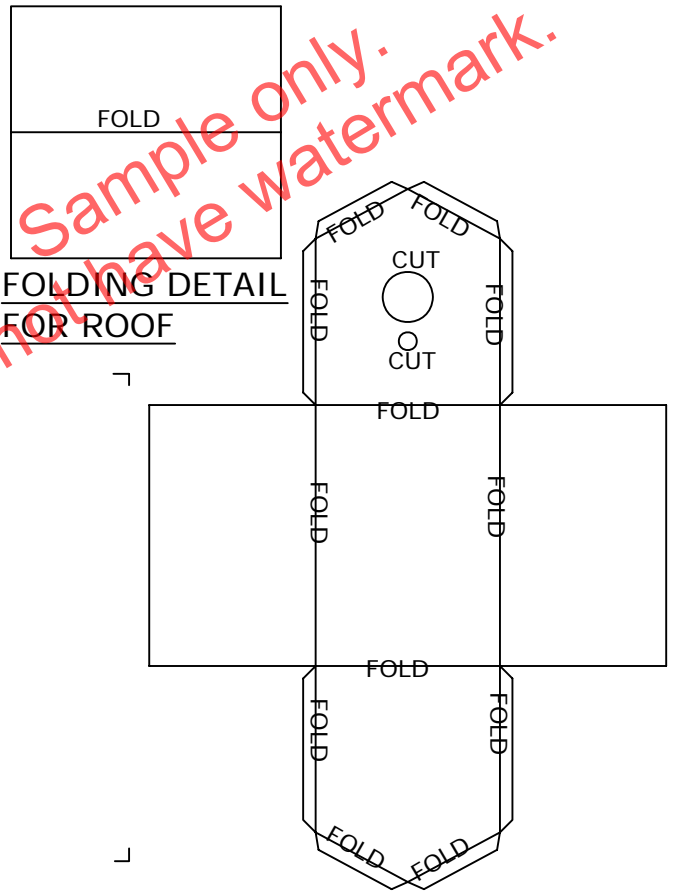
Date: June, 2006  
 Project: Bird House  
 Project description:  
 Draw and build a  
 paper bird house.



PERCH

FLAT PATTERN FOR HOUSE

FLAT PATTERN FOR ROOF



FOLDING DETAIL FOR ROOF

FOLDING DETAIL FOR HOUSE

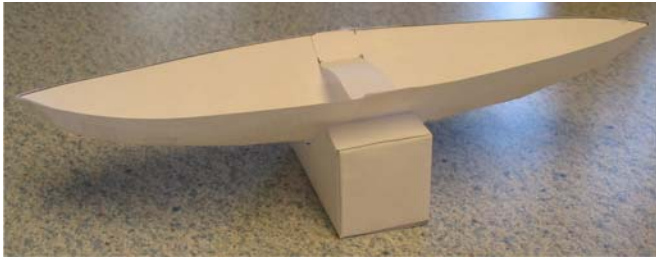


**INSIGHT™**  
**TECHNICAL EDUCATION**

877-640-2256

For more information, visit the Insight Technical Education web site at [www.insighttech.com](http://www.insighttech.com)

Drawn by: Clay Peterman  
 ©Melvin G. Peterman 2006. ALL RIGHTS RESERVED. This project may not be copied or transmitted without written permission. Permission is granted to purchaser to print for personal use only.



**Instructions:**

1. Draw over the intersections with a pencil.
2. Cut out the flat patterns.
3. Fold on all of the lines marked "FOLD" on the "FOLDING DETAIL".
5. Use small pieces of clear tape to fasten the tabs of the flat pattern in place.
6. Apply tape as desired along keel

Date: July, 2006  
 Project: Boat and Stand  
 Project description:  
 Draw and build a  
 paper row boat with a  
 stand.



FLAT PATTERN FOR SEAT



FOLDING DETAIL

Copyrighted material. Sample only.  
 Purchased version does not have watermark.



FLAT PATTERN FOR BOAT



**INSIGHT™**  
**TECHNICAL EDUCATION**

877-640-2256

For more information, visit the Insight Technical Education web site at [www.insighttech.com](http://www.insighttech.com)

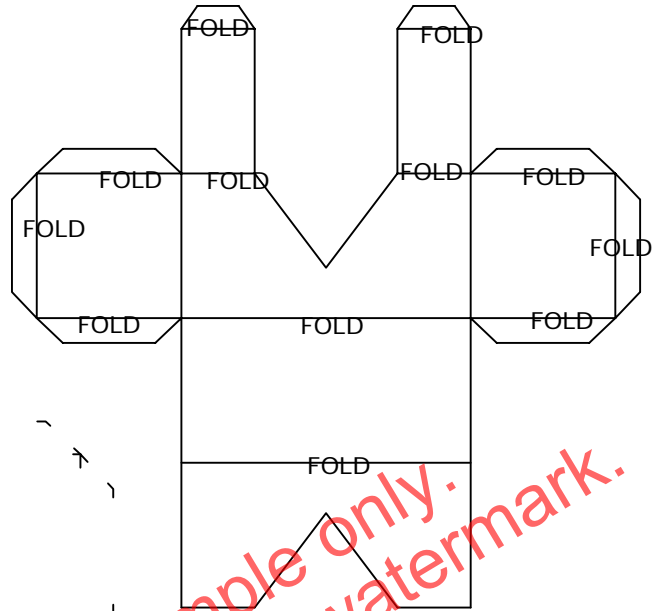
Drawn by: Clay Peterman  
 ©Melvin G. Peterman 2006. ALL RIGHTS RESERVED. This project may not be copied or transmitted without written permission. Permission is granted to purchaser to print for personal use only.

Instructions:

1. Draw over the intersections with a pencil.
2. Cut out the flat patterns.
3. Fold on all of the lines marked "FOLD" on the "FOLDING DETAIL".
5. Use small pieces of clear tape to fasten the tabs of the flat pattern in place.



FLAT PATTERN FOR STAND



FOLDING DETAIL FOR STAND

Copyrighted material. Sample only.  
Purchased version does not have watermark.



**INSIGHT™**  
**TECHNICAL EDUCATION**

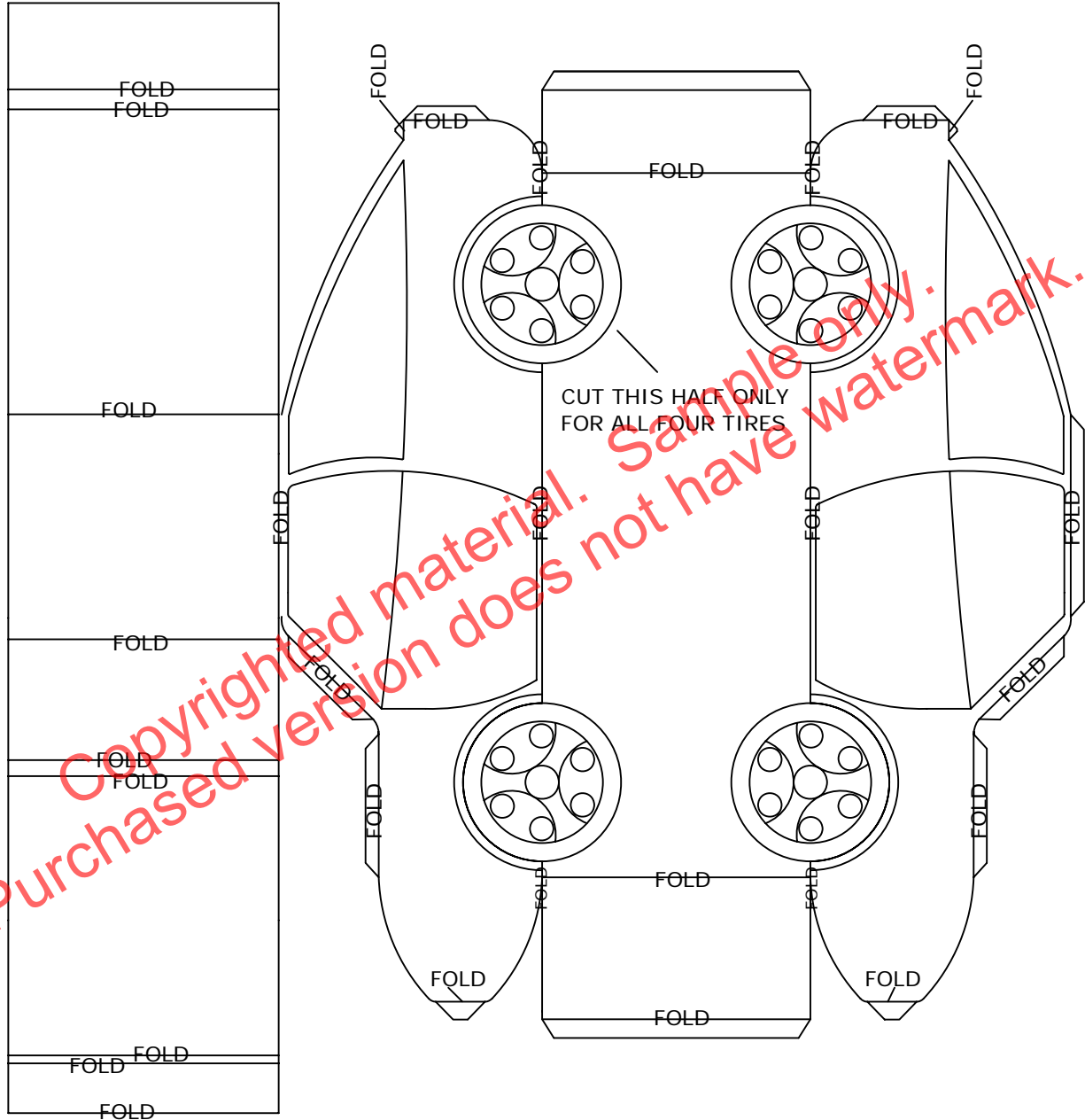
877-640-2256



Date: August, 2006  
 Project: Car model  
 Project description:  
 Draw and build a  
 paper car.

Instructions:

1. Draw over the intersections with a pencil.
2. Cut out the flat pattern.
3. Use a sharp craft knife to cut the half circles on the bottom half of the tires. Adult supervision recommended.
4. Fold on all of the lines marked "FOLD" on the "FOLDING DETAIL" do NOT fold tires.
5. Use small pieces of clear tape to fasten the tabs of the flat pattern in place.



Copyrighted material. Sample only. Purchased version does not have watermark.

FOLDING DETAIL



**INSIGHT™**  
**TECHNICAL EDUCATION**

877-640-2256

For more information, visit the Insight Technical Education web site at [www.insightteched.com](http://www.insightteched.com)

Drawn by: Clay Peterman

Copyrighted material. Sample only.  
Purchased version does not have watermark.

FLAT PATTERN FOR CAR

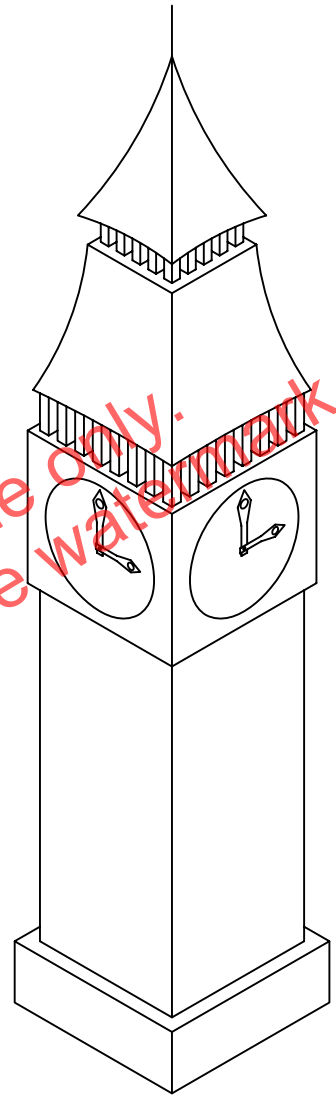


**INSIGHT™**  
**TECHNICAL EDUCATION**

877-640-2256

Date: September, 2006  
Project: Clock Tower  
Complete-A-Sketch  
Project description:  
Draw an isometric clock  
tower.

Instructions:  
1. Draw over the  
intersections with a  
pencil to complete the  
picture.



Copyrighted material. Sample Only.  
Purchased version does not have watermark.



**INSIGHT™**  
**TECHNICAL EDUCATION**

877-640-2256

For more information, visit the Insight Technical  
Education web site at [www.insighttched.com](http://www.insighttched.com)

Drawn by: Clay Peterman

©Melvin G. Peterman 2006. ALL RIGHTS RESERVED. This project  
may not be copied or transmitted without written permission.

Permission is granted to purchaser to print for personal use only.



Date: October, 2006  
Project: Cylinder with  
Crossing Pipe  
Project description:  
Draw and build a  
paper cylinder with a pipe  
going through it.

Instructions:

1. Draw over the intersections with a pencil.
2. Cut out the flat pattern.
3. Use a sharp craft knife to cut out the ellipses.
4. Fold on all of the lines marked "FOLD" on the "FOLDING DETAIL".
5. Use small pieces of clear tape to fasten the flat pattern together.

Copyrighted material. Sample only.  
Purchased version does not have watermark.

┌

┐

|

|

|

└

┘

FOLDING DETAIL FOR PIPE



**INSIGHT™**  
**TECHNICAL EDUCATION**

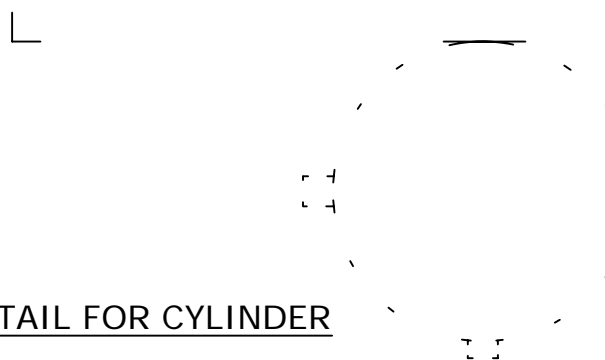
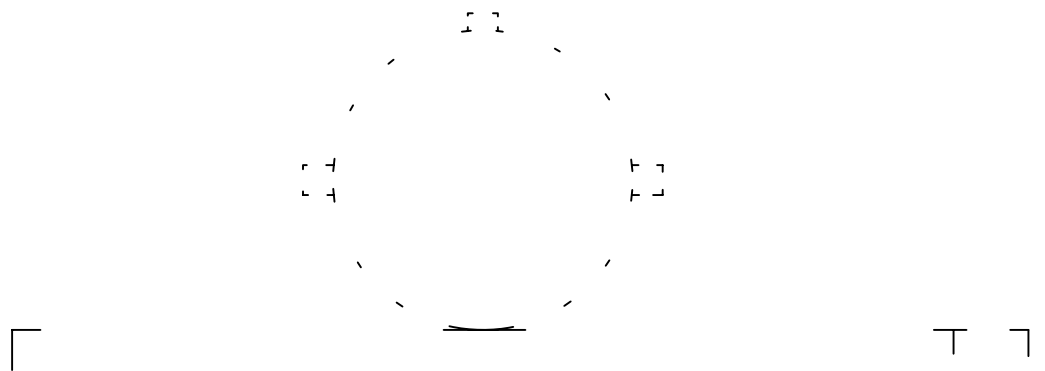
877-640-2256

For more information, visit the Insight Technical  
Education web site at [www.insightteched.com](http://www.insightteched.com)

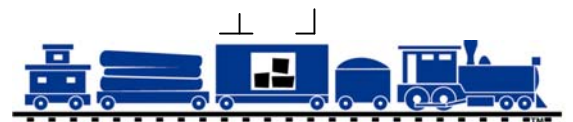
Drawn by: Clay Peterman



Copyrighted material. Sample only.  
Purchased version does not have watermark.



FOLDING DETAIL FOR CYLINDER



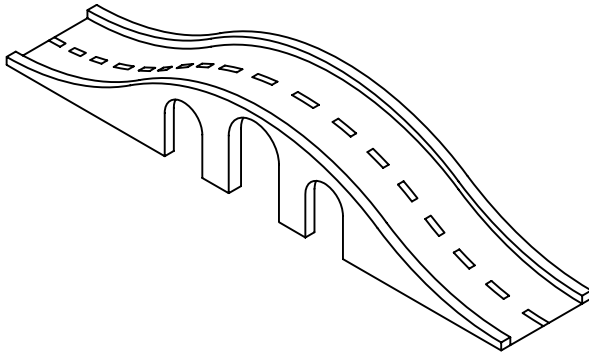
**INSIGHT™**  
**TECHNICAL EDUCATION**

Drawn by: Clay Peterman  
©Melvin G. Peterman 2006. ALL RIGHTS RESERVED. This project may not be copied or transmitted without written permission. Permission is granted to purchaser to print for personal use only. [www.insighttech.com](http://www.insighttech.com)

Date: November, 2006  
Project: Bridge  
Complete-A-Sketch  
Project description:  
Draw an isometric bridge.

Instructions:

1. Draw over the intersections with a pencil to complete the picture.

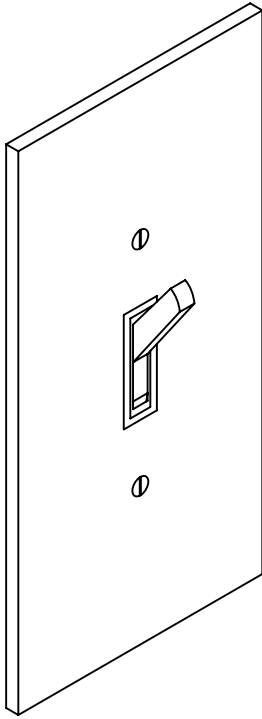


Copyrighted material. Sample only.  
Purchased version does not have watermark.



**INSIGHT™**  
**TECHNICAL EDUCATION**

877-640-2256



Date: December, 2006  
Project: Light Switch  
Complete-A-Sketch  
Project description:  
Draw an isometric light switch.

Instructions:  
1. Draw over the intersections with a pencil to complete the picture.



Copyrighted material. Sample only.  
Purchased version does not have watermark.



**INSIGHT™**  
**TECHNICAL EDUCATION**

877-640-2256

# Thank you for purchasing this book!

*We hope that you have enjoyed this book and that it has helped you in meeting your goals and that what you have learned will benefit you in your life pursuits.*

*Our complete line of books:*

COMPLETE-A-SKETCH™ VOLUME 1 - ORTHOGAPHIC  
COMPLETE-A-SKETCH™ VOLUME 2 - ISOMETRIC  
COMPLETE-A-SKETCH™ VOLUME 3 - PERSPECTIVE  
COMPLETE-A-SKETCH™ VISION - DEXTERITY - FOCUS™  
PRACTICAL DRAFTING™  
PRACTICAL GRAPHIC DESIGN™  
PRACTICAL ACCOUNTING FUNDAMENTALS™

*We are always working on new books, so please feel free to visit our website to see what new topics we may have added.*

*All the best,*

*Mel Peterman, Publisher*

*Insight Technical Education*

*[www.insightteched.com](http://www.insightteched.com)*

*877.640.2256*

*Copyrighted material. Sample only.  
Purchased version does not have watermark.*